

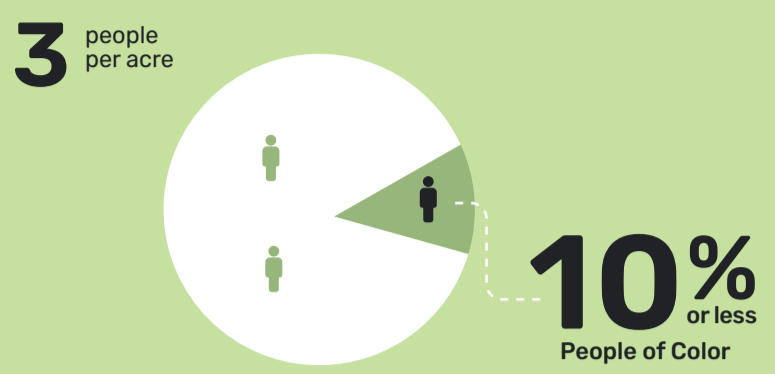
A Tale of Two Neighborhoods in Minneapolis

LESS THAN 2 MILES APART

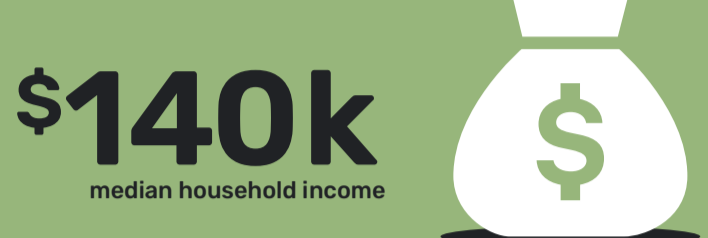
NEIGHBORHOOD A

NEIGHBORHOOD B

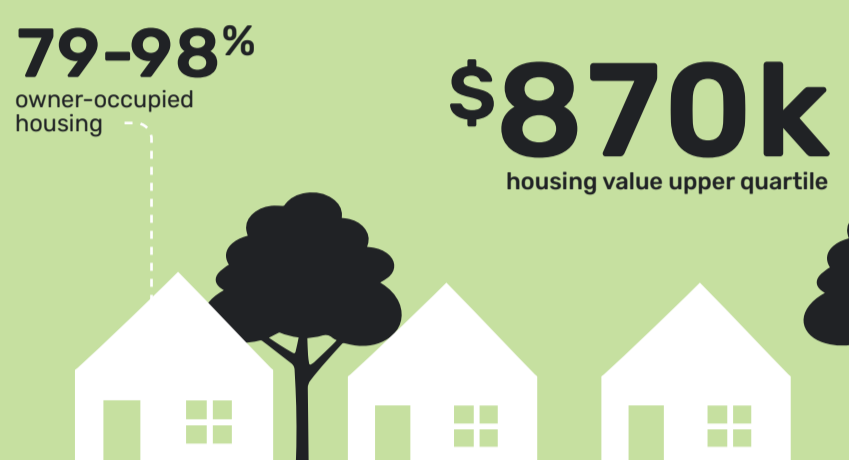
POPULATION



INCOME DISTRIBUTION



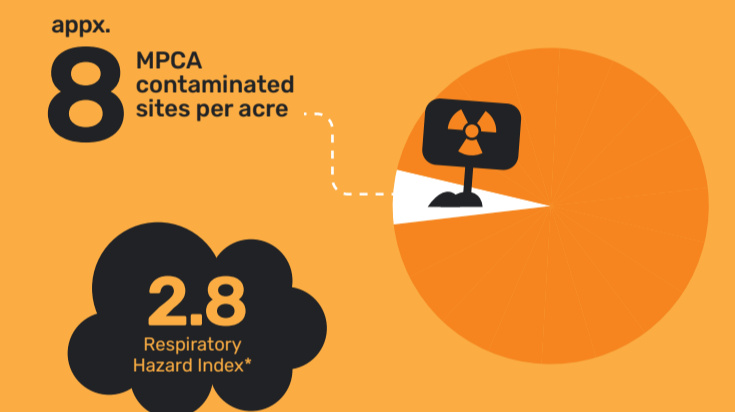
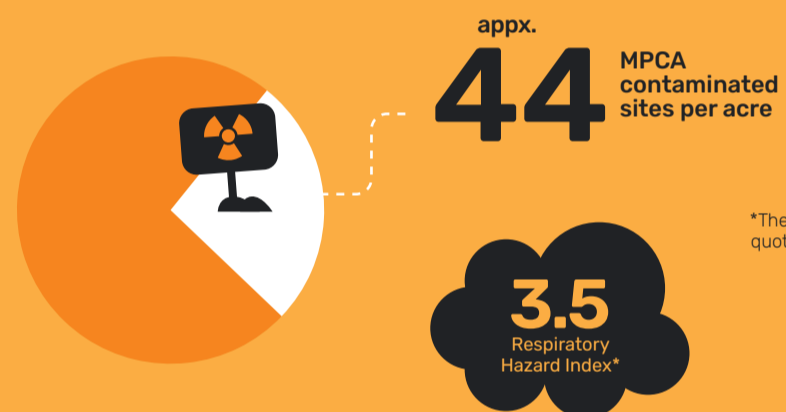
HOUSING



ENERGY VULNERABILITY

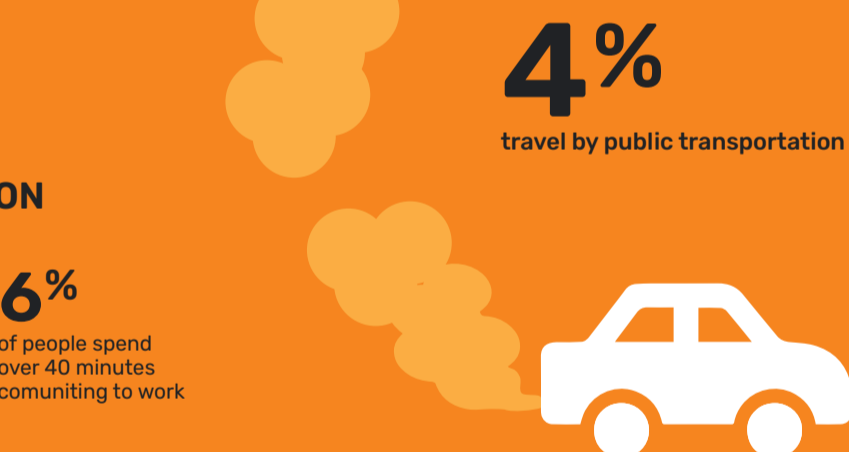
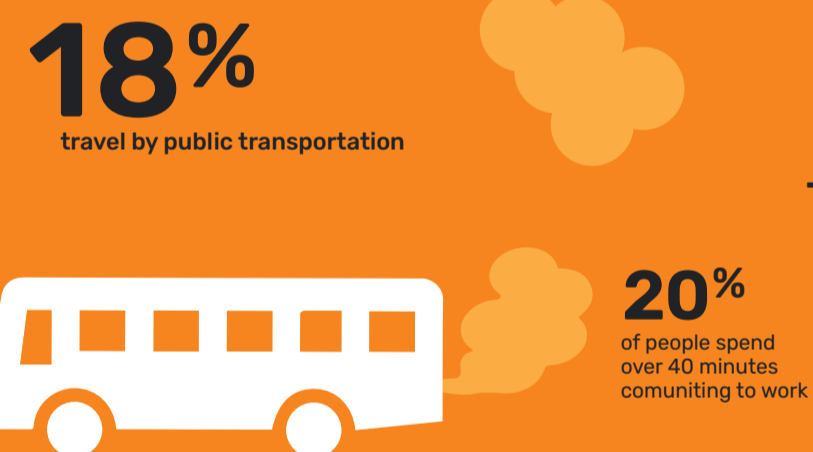


AIR QUALITY

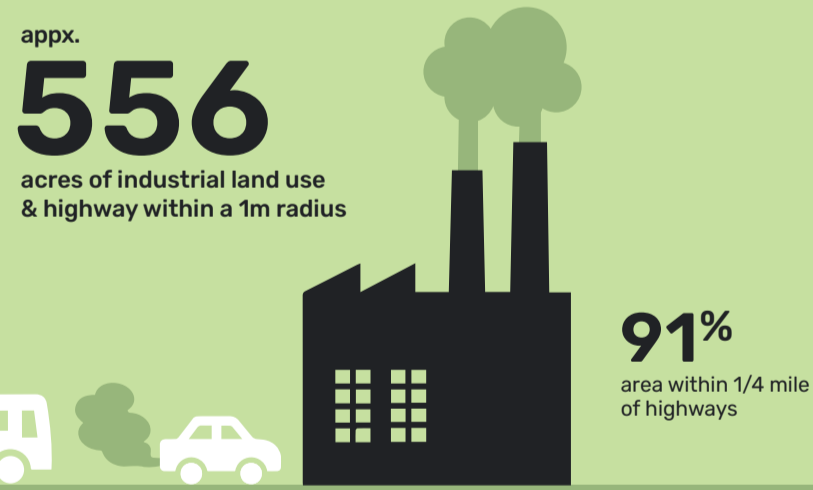


*The Respiratory Hazard Index is the sum of hazard quotients for substances that affect the respiratory system (i.e. lungs and air passages)

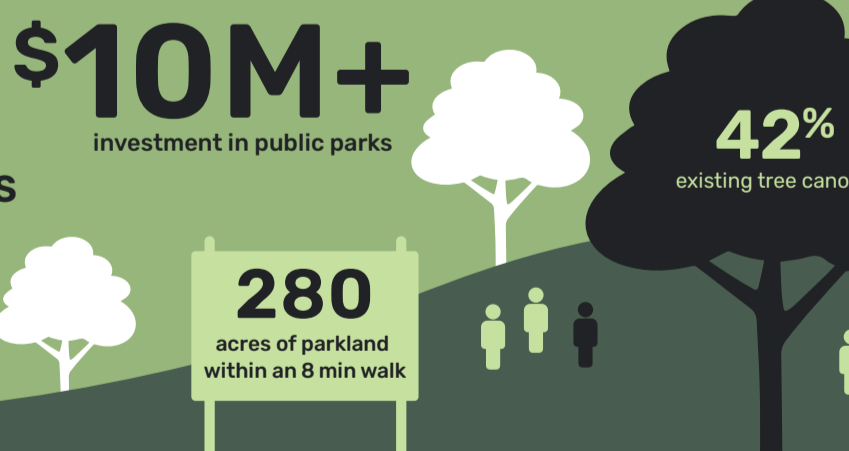
TRANSPORTATION



LAND USE



GREEN SPACES



ACCESS TO HEALTHY FOOD



SOURCES

Population density, percent of People of Color, media household income distribution (2012 inflation-adjusted dollars), percent owner-occupied housing: Minneapolisdata.com & U.S. Census 2010, block group level & Hennepin County and Ramsey County parcel data, July 2012 & 2012 American Community Survey 1-year estimates.

Household value upper quartile: U.S. Census 2005-2009 American Community Survey.

Percent of people spending more than 40 minutes commuting to work: U.S. Census Bureau, 2008-2012 American Community Survey.

Land Use: Metropolitan Council, Generalized Land Use 2010 for the Twin Cities Metropolitan Area.

2010 energy poverty: US Census 2010 and American Community Survey 2012.

Percent within 1/4 mile buffer: Hennepin County, Ramsey County Air Quality: EPA 2005 Nationalscale Air Toxics Assessment(NATA) & NATA Glossary of terms.

MPCA contaminated sites: Minnesota Pollution Control Agency Site Data.

Existing tree canopy: The City of Minneapolis 2009 Urban Tree Canopy (UTC) Analysis.

Access to public parks: The Trust for Public Land 2014 Parkscore Index Minneapolis, Minnesota.

2000-2014 park capital investment: Minneapolis Recreation and Park Board Capital Investment History & Projection.

Access to healthy food: The City of Minneapolis 2013 Healthy Food Outlet Buffers.



Center for Earth, Energy & Democracy

Bringing Justice to Sustainability

www.CEED.org | info@ceed.org